

COLLEZIONE
IL DUOMO

COLLEZIONE
IL DUOMO



COLLEZIONE IL DUOMO

La Collezione Il Duomo della Ceramica Francesco De Maio trae ispirazione da uno dei simboli architettonici più importanti della Costiera Amalfitana: la Cattedrale di Sant'Andrea o Duomo di Amalfi.

Colpisce per la sua facciata imponente e per la scenografica scalinata di accesso, composta da 62 gradini. Netta è la distinzione architettonica su più livelli e il mix di stili tra il neomoresco e il neogotico. In cima alla facciata a prevalere è l'oro che fa da sfondo a un ricco mosaico raffigurante Cristo in trono circondato dai suoi Evangelisti. Ma oltre all'imponente architettura, la scalinata fa da cornice alla ormai nota leggenda del Santo che corre. Un'attrazione che si ripete ogni anno il 27 giugno allorquando si festeggia Sant'Andrea, il santo patrono di Amalfi, che salvò la città dall'invasione dei Saraceni, scatenando un mare in tempesta. L'effigie del Santo viene accompagnata in processione, attraversando tutta la città fino al mare e si conclude

e si conclude con la celebre e spettacolare corsa su per la ripida scalinata della Cattedrale. I portatori, tutti vestiti di rosso, salgono la maestosa statua di bronzo correndo, accompagnati dalla marcia del Mosè in Egitto di Rossini e incitati dalla folla di fedeli.

Un insieme di tradizioni, di culture, di stili e linee architettoniche sono ripercorsi nella Collezione Il Duomo che la Ceramica Francesco De Maio propone nel formato 53x53x1,2cm, con finitura opaca, rigorosamente decorata a mano, pezzo per pezzo. Un mood molto elegante e sofisticato, adatto ad ambienti sia interni che esterni. Quattro le varianti di colori, brillanti e vivaci o tenui e decisi da utilizzare per progetti classici o moderni.

Un insieme di geometrie che traggono spunto dalle decorazioni stilizzate, veramente stupende, della Cattedrale di Sant'Andrea in Amalfi: dalla maestosa facciata, dalla sua ripida scalinata, dalla pavimentazione in marmo della navata centrale, dalla sontuosa cripta fino ad arrivare a quell'intreccio di stili dal moresco al gotico al barocco racchiusi in un grande guadino per ricordare che Amalfi è la prima e più grande Repubblica Marinara.

The Duomo Collection of Ceramica Francesco De Maio draws inspiration from one of the most important architectural symbols of the Amalfitan Coast: the Cathedral of Sant'Andrea or the Cathedral of Amalfi.

It's striking for its imposing façade and for the scenographic entry stairway, consisting of 62 steps. There is a clear architectural distinction on different levels and the mix of styles between neo-moorish and neo-gothic. On top of the facade, gold prevails on the background of a rich mosaic portraying Christ enthroned surrounded by his Evangelists.

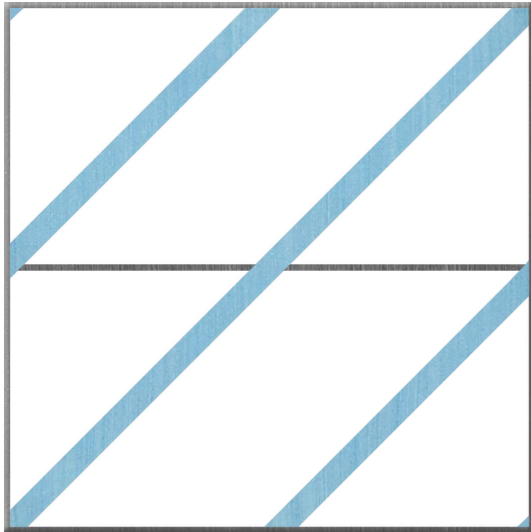
As well as the impressive architecture, the staircase is the frame of the well known legend of the Saint running. An attraction that is repeated every year on June 27 when Saint Andrew is celebrated the patron of Amalfi, who saved the city from the invasion of the Saracens, unleashing a stormy in to the sea. The effigy of the Saint Andrew is driven in a procession, crossing the whole city to the sea and ending with the famous and spectacular race up on the steep staircase of the Cathedral. The bearers, all dressed in a red color, run up the majestic bronze statue, accompanied by the scape of Moses in Egypt edited by Rossini and incited by the crowd of faithful.

A set of traditions, cultures, styles and architectural lines are retraced in the Il Duomo Collection that Ceramica Francesco De Maio offers in the 53x53x1.2cm size, with R10 no-slip finish, rigorously decorated by hand, piece by piece. An elegant and sophisticated mood, suitable for both environments indoor and outdoor. Four variants of colors, bright and lively, soft and decisive to be used for classic or modern projects.

A set of geometries that are inspired by the truly stupendous stylized decorations of the Cathedral of Sant'Andrea in Amalfi: from the majestic facade, its steep staircase, from the marble floor of the central nave, from the sumptuous crypt up to that intertwining of styles from moorish to gothic to baroque enclosed in a large landing net to remind that Amalfi is the first and most important Maritime Republic.

IL DUOMO COLLEZIONE

4

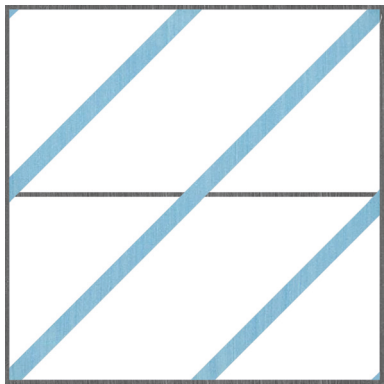


IL DUOMO

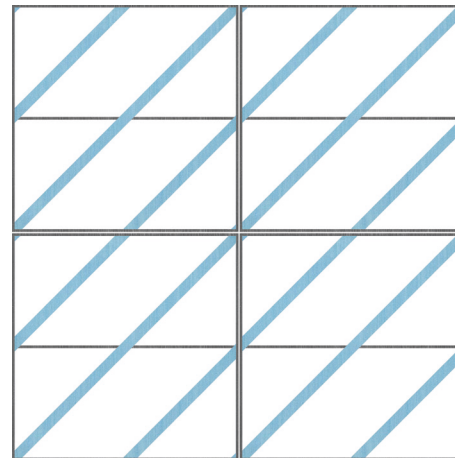
Azzurro Cielo - Basalto



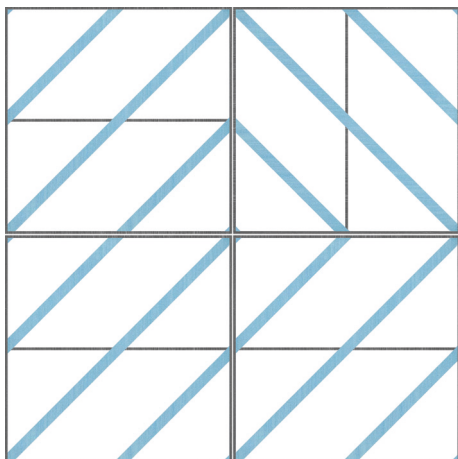




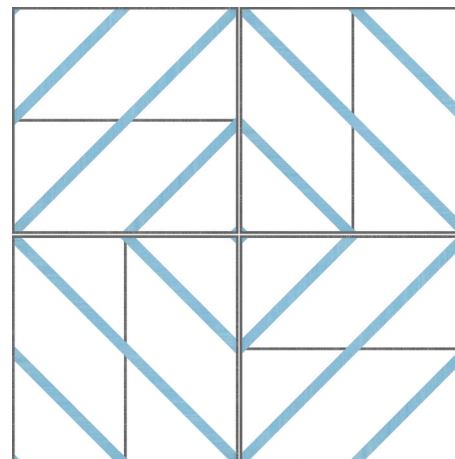
IL DUOMO
Azzurro Cielo - Basalto



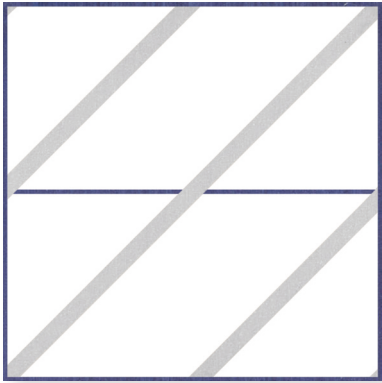
IL DUOMO
Comp. 4Pz A



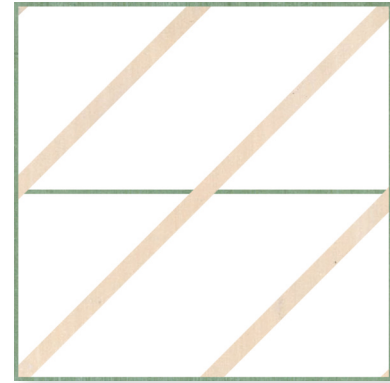
IL DUOMO
Comp. 4Pz B



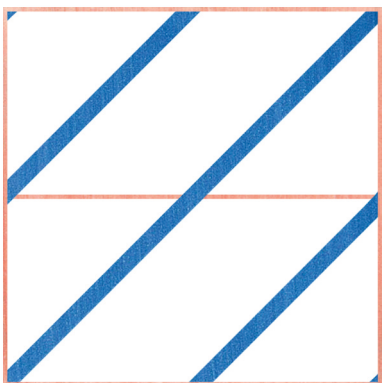
IL DUOMO
Comp. 4Pz C



IL DUOMO
Grigio Chiaro - Viola



IL DUOMO
Avana - Verde Scuro



IL DUOMO
Corallo - Indaco



Azzurro Cielo - Basalto



Grigio Chiaro - Viola



Avana - Verde Scuro

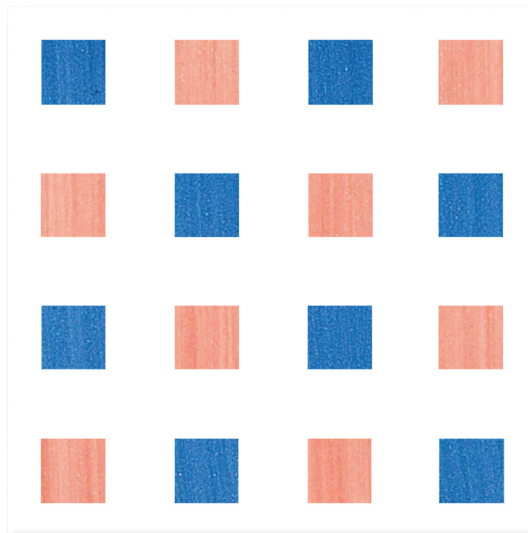


Corallo - Indaco

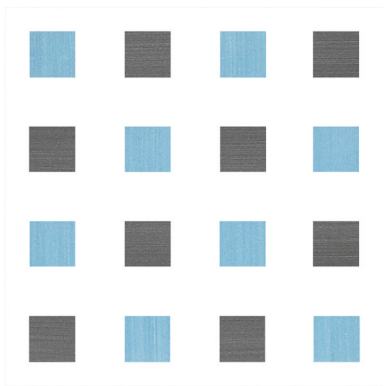
IL DUOMO COLLEZIONE

8

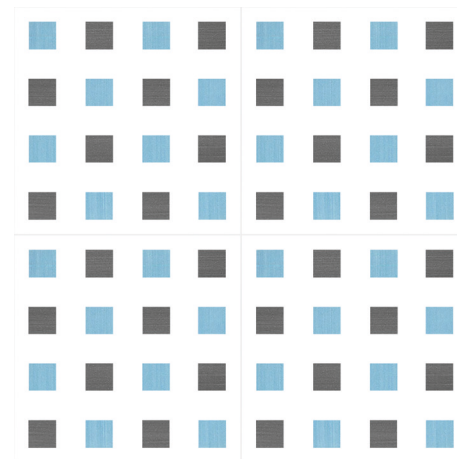




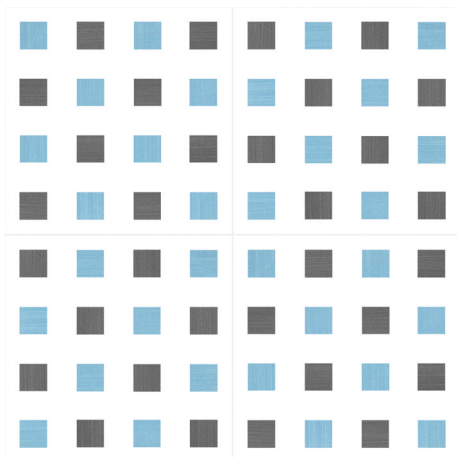
LA NAVATA



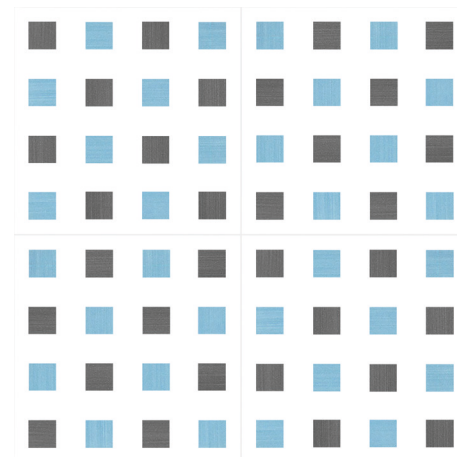
LA NAVATA
Azzurro Cielo - Basalto



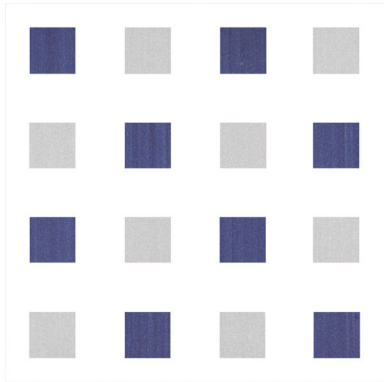
LA NAVATA
Comp. 4Pz A



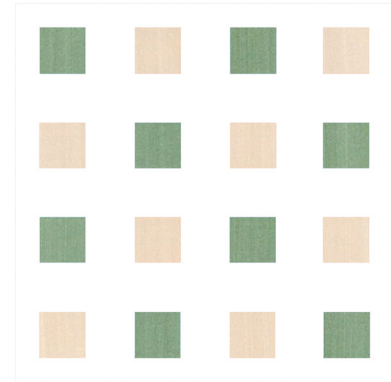
LA NAVATA
Comp. 4Pz B



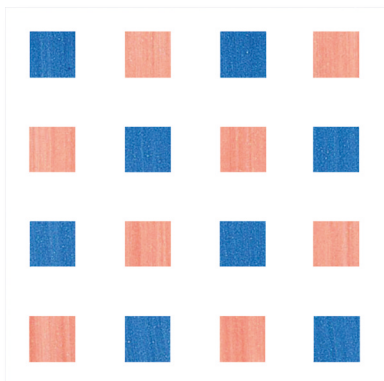
LA NAVATA
Comp. 4Pz C



LA NAVATA
Grigio Chiaro - Viola



LA NAVATA
Avana - Verde Scuro



LA NAVATA
Corallo - Indaco



Azzurro Cielo - Basalto



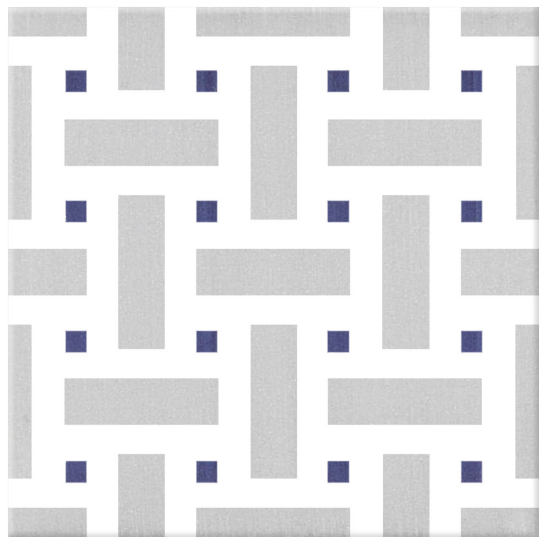
Grigio Chiaro - Viola



Avana - Verde Scuro



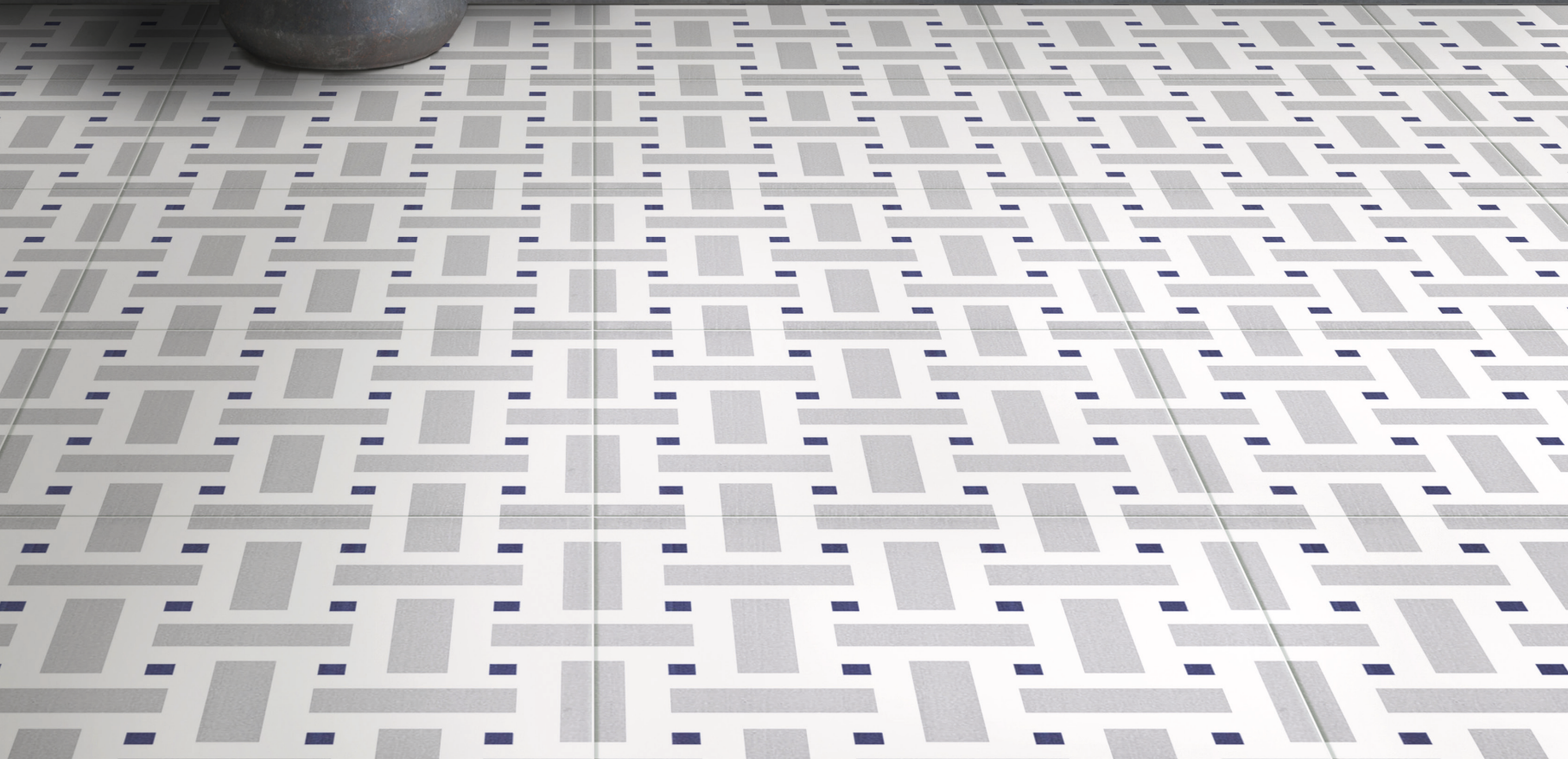
Corallo - Indaco

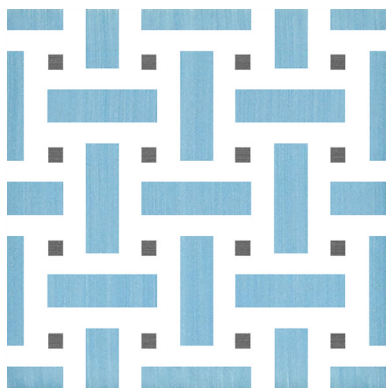


LA CRIPTA

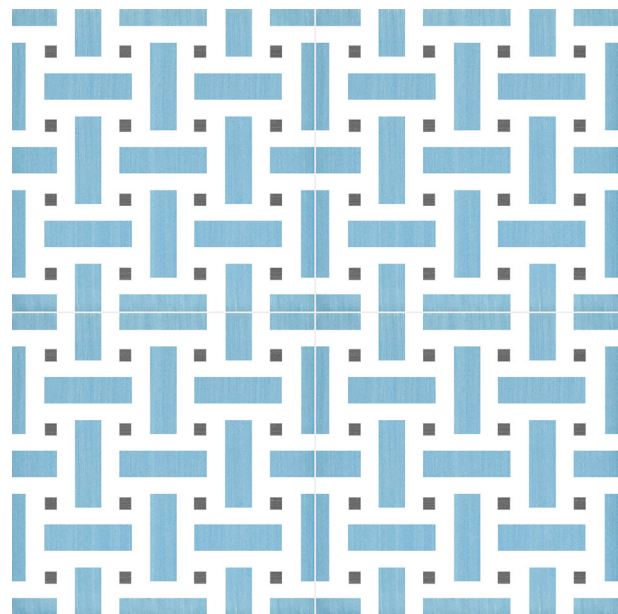
Grigio Chiaro - Viola



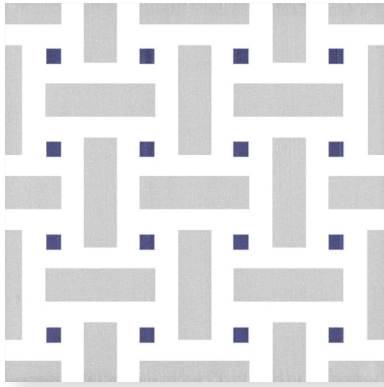




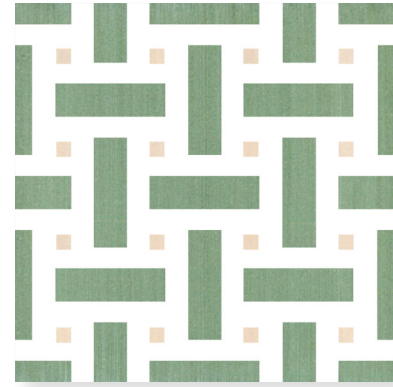
LA CRIPTA
Azzurro Cielo - Basalto



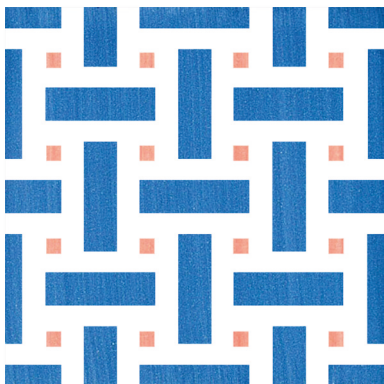
LA CRIPTA
Comp. 4Pz



LA CRIPTA
Grigio Chiaro - Viola



LA CRIPTA
Avana - Verde Scuro



LA CRIPTA
Corallo - Indaco



Azzurro Cielo - Basalto



Grigio Chiaro - Viola



Avana - Verde Scuro

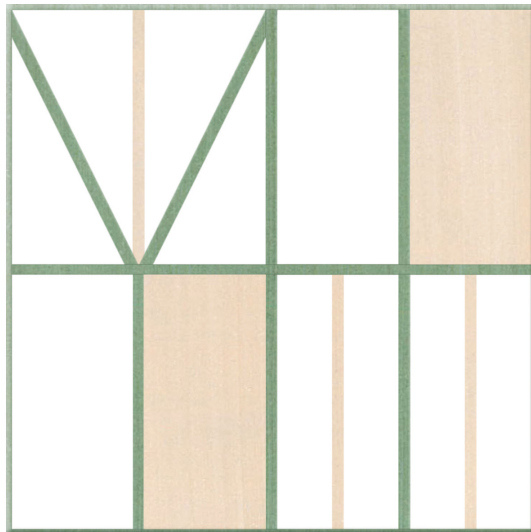


Corallo - Indaco

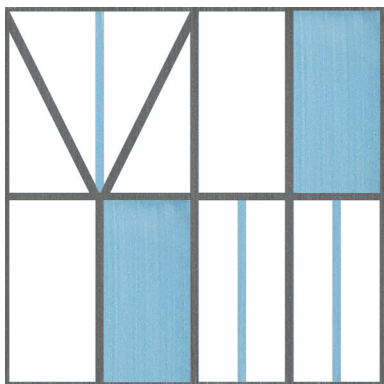
IL DUOMO COLLEZIONE

16

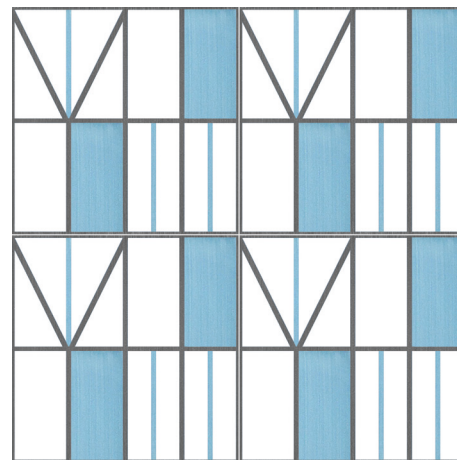




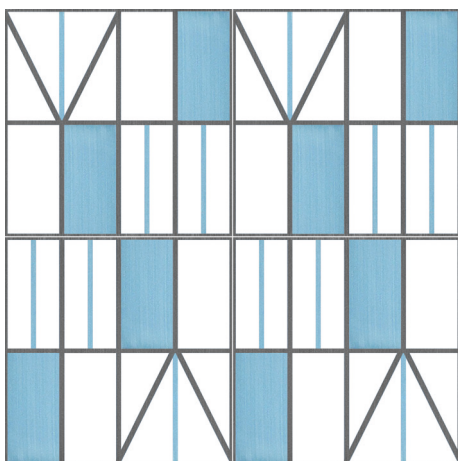
LA FACCIATA



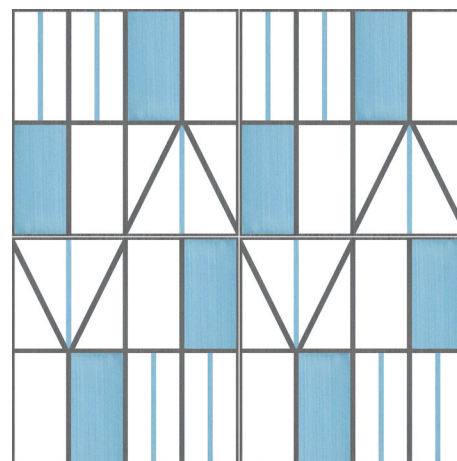
LA FACCIATA
Azzurro Cielo - Basalto



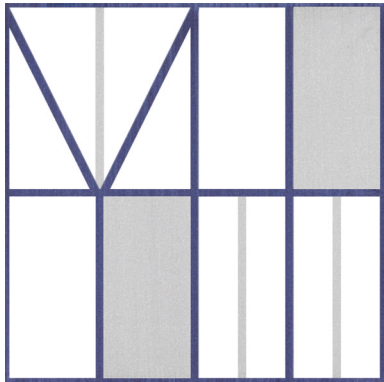
LA FACCIATA
Comp. 4Pz A



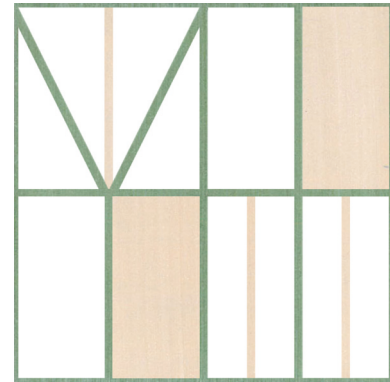
LA FACCIATA
Comp. 4Pz B



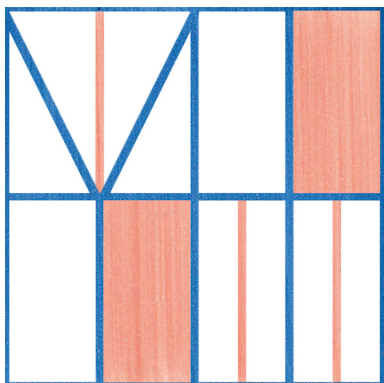
LA FACCIATA
Comp. 4Pz C



LA FACCIATA
Grigio Chiaro - Viola



LA FACCIATA
Avana - Verde Scuro



LA FACCIATA
Corallo - Indaco



Azzurro Cielo - Basalto



Grigio Chiaro - Viola



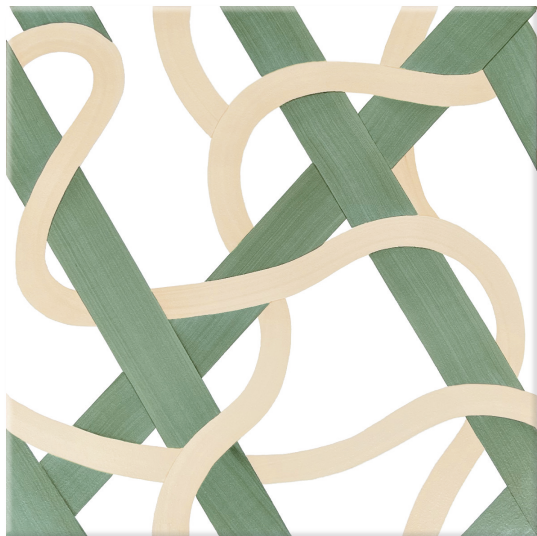
Avana - Verde Scuro



Corallo - Indaco

IL DUOMO COLLEZIONE

20

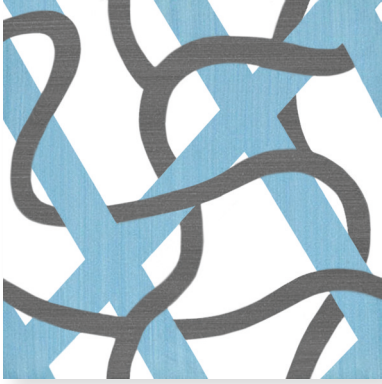


IL GUADINO

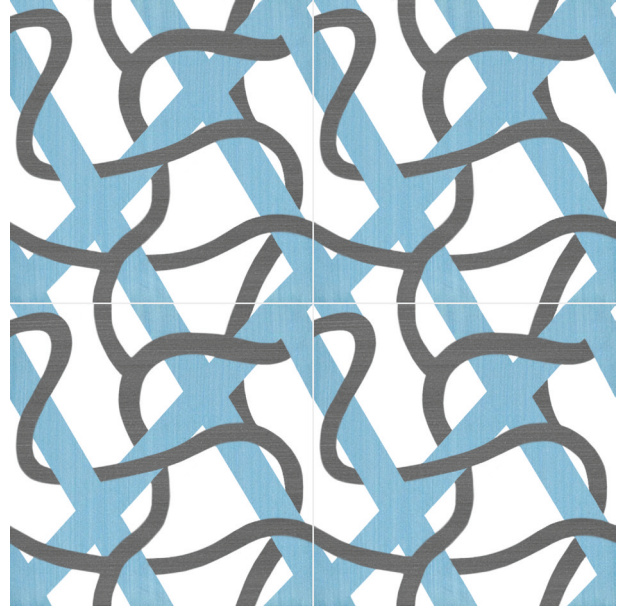
Avana - Verde Scuro



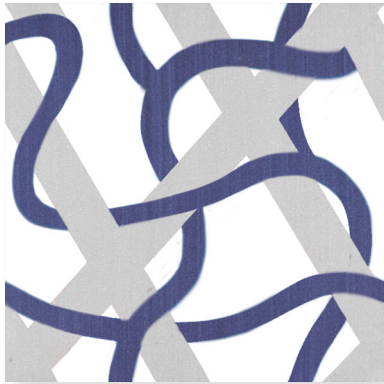




IL GUADINO
Azzurro Cielo - Basalto



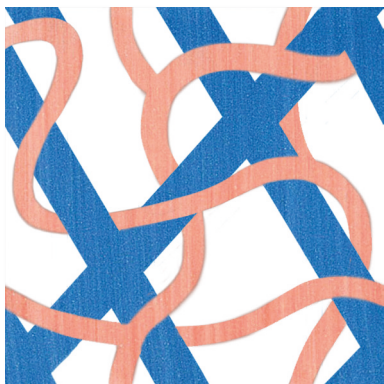
IL GUADINO
Comp. 4Pz



IL GUADINO
Grigio Chiaro - Viola



IL GUADINO
Avana - Verde Scuro



IL GUADINO
Corallo - Indaco



Azzurro Cielo - Basalto



Grigio Chiaro - Viola



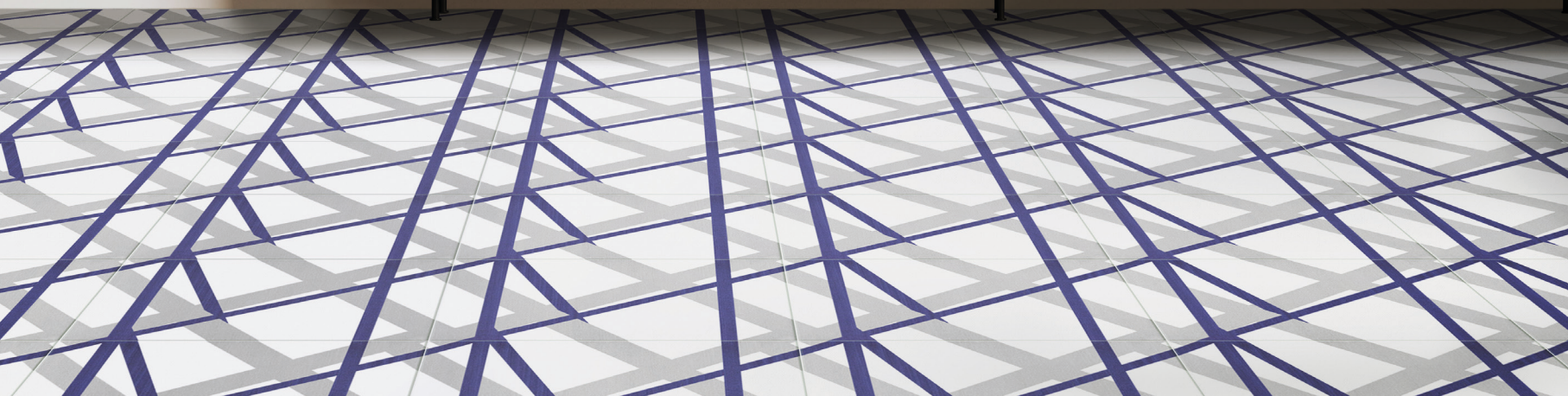
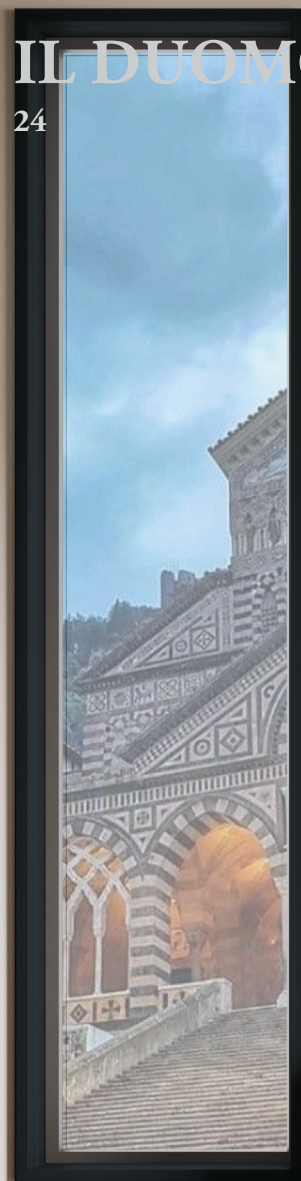
Avana - Verde Scuro

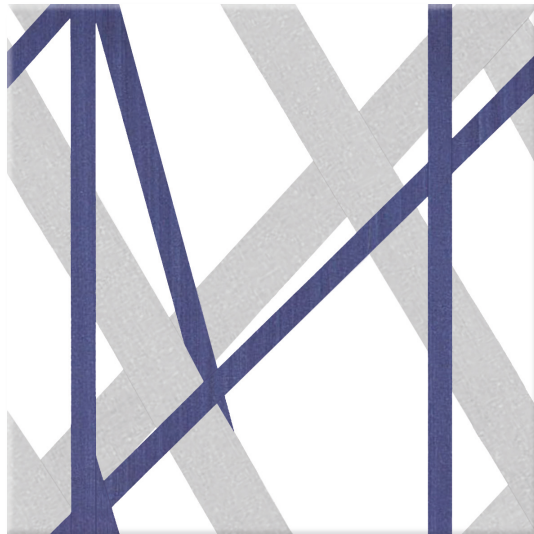


Corallo - Indaco

IL DUOMO COLLEZIONE

24

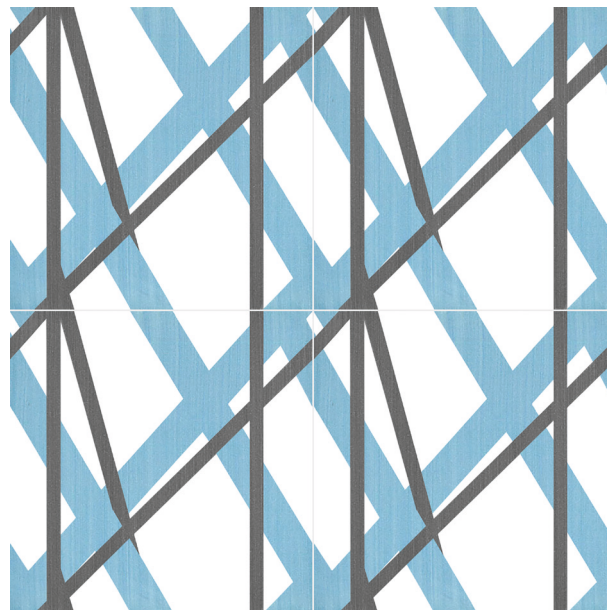




IL SARACENO



IL SARACENO
Azzurro Cielo - Basalto



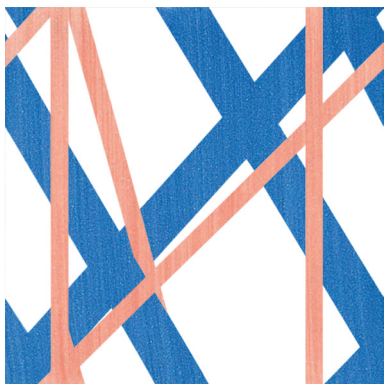
IL SARACENO
Comp. 4Pz



IL SARACENO
Grigio Chiaro - Viola



IL SARACENO
Avana - Verde Scuro



IL SARACENO
Corallo - Indaco



Azzurro Cielo - Basalto



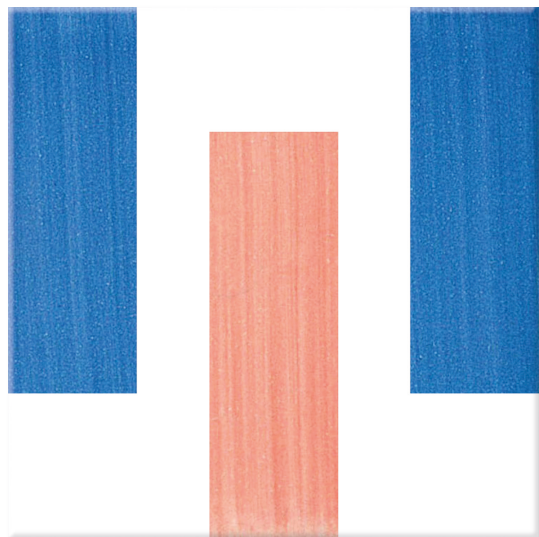
Grigio Chiaro - Viola



Avana - Verde Scuro



Corallo - Indaco

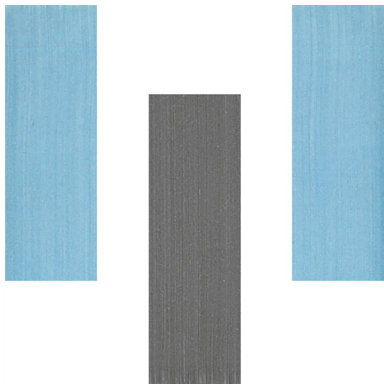


LA SCALINATA

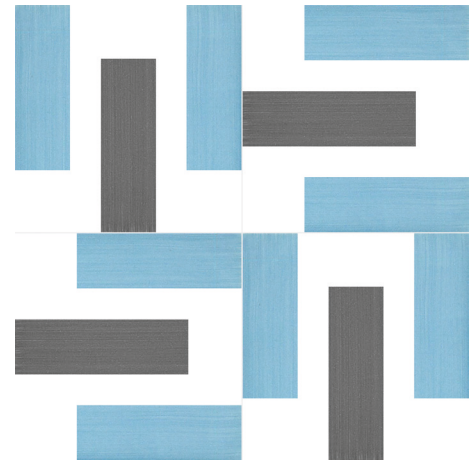
Corallo - Indaco



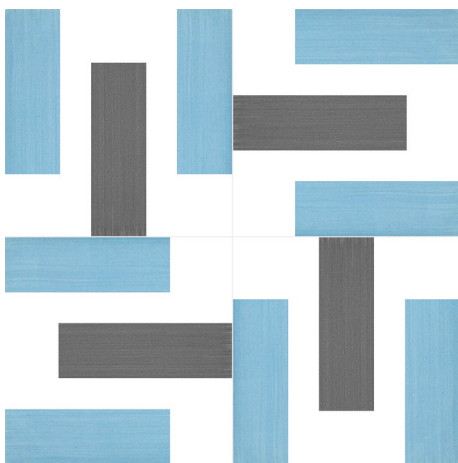




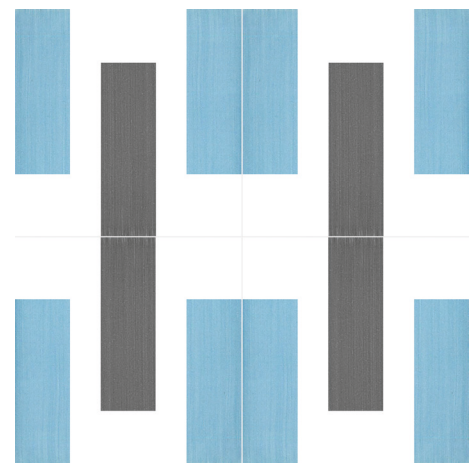
LA SCALINATA
Azzurro Cielo - Basalto



LA SCALINATA
Comp. 4Pz A

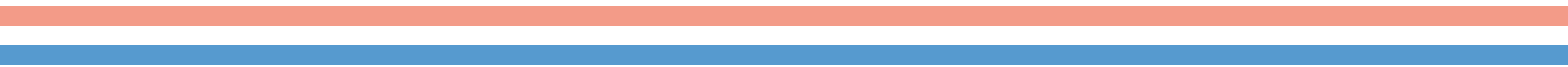


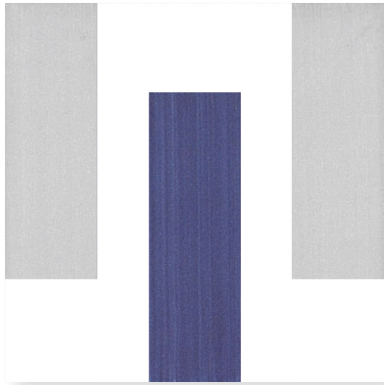
LA SCALINATA
Comp. 4Pz B



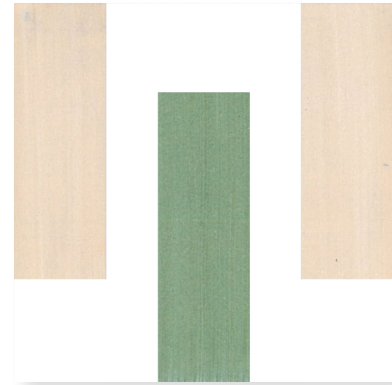
LA SCALINATA
Comp. 4Pz C

53x53x1,2cm

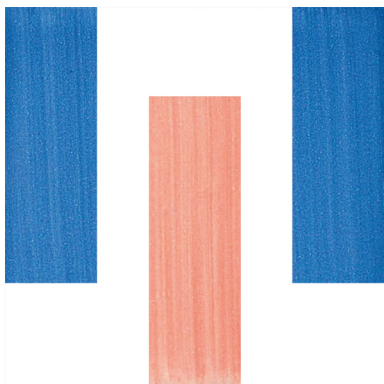




LA SCALINATA
Grigio Chiaro - Viola



LA SCALINATA
Avana - Verde Scuro



LA SCALINATA
Corallo - Indaco



Azzurro Cielo - Basalto



Grigio Chiaro - Viola

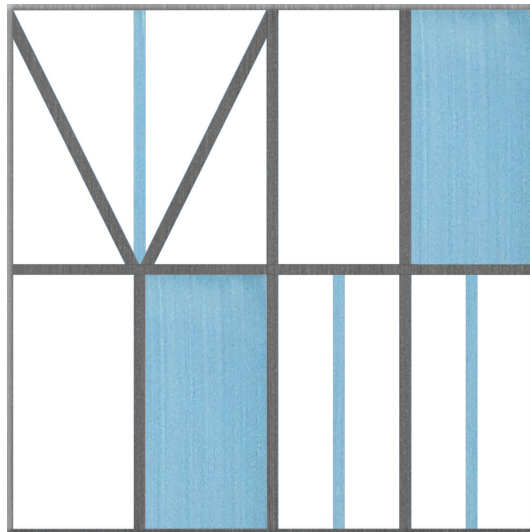


Avana - Verde Scuro

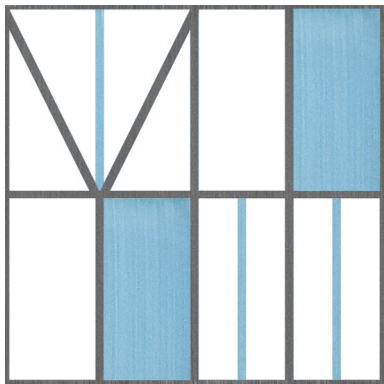


Corallo - Indaco

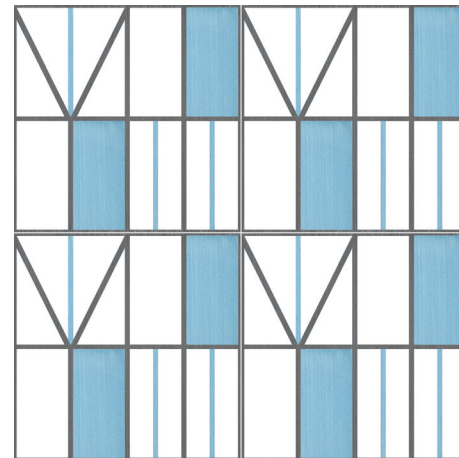




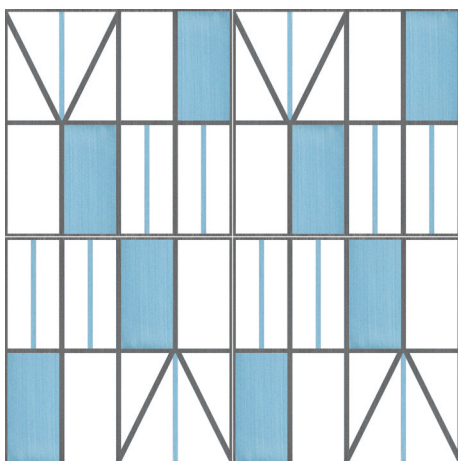
LA FACCIATA



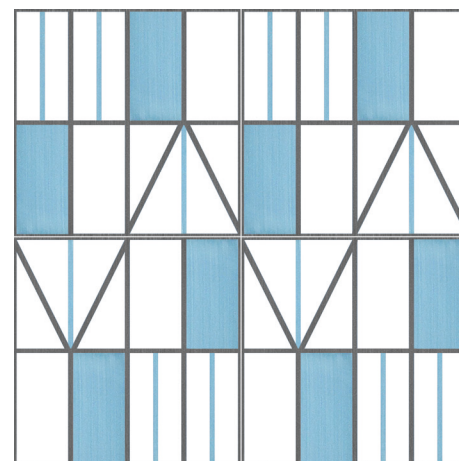
LA FACCIATA
Azzurro Cielo - Basalto



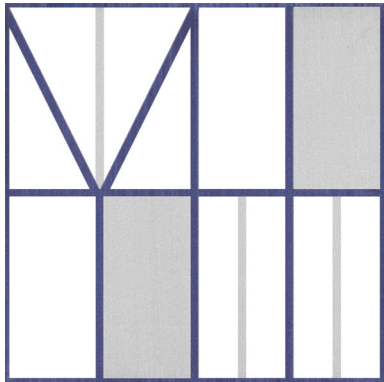
LA FACCIATA
Comp. 4Pz A



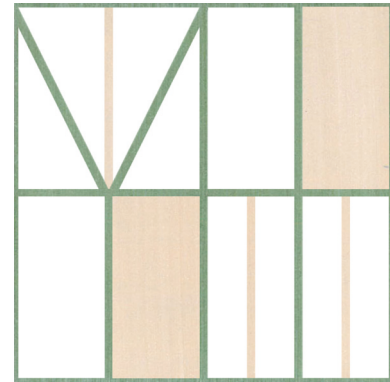
LA FACCIATA
Comp. 4Pz B



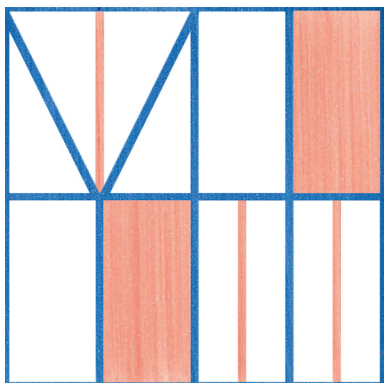
LA FACCIATA
Comp. 4Pz C



LA FACCIATA
Grigio Chiaro - Viola



LA FACCIATA
Avana - Verde Scuro



LA FACCIATA
Corallo - Indaco



Azzurro Cielo - Basalto



Grigio Chiaro - Viola



Avana - Verde Scuro

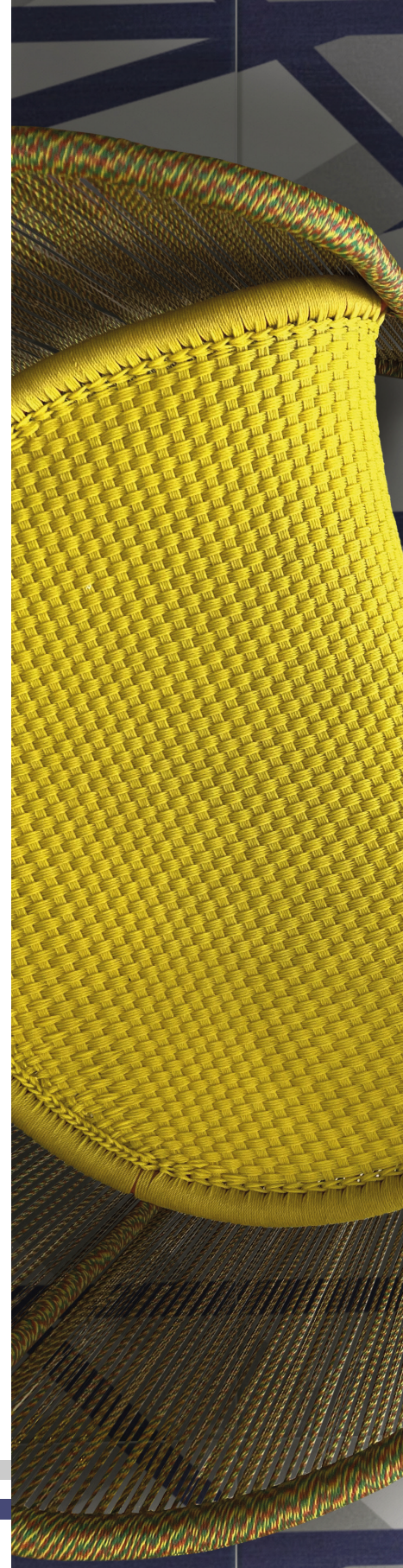


Corallo - Indaco



IL SARACENO

Grigio Chiaro - Viola



COLLEZIONE IL DUOMO

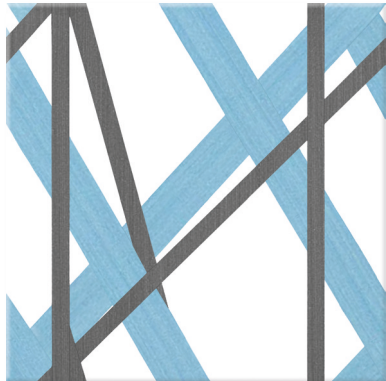
37



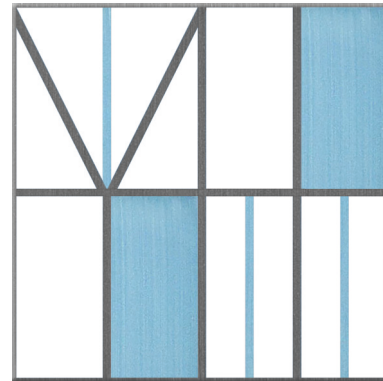
IL DUOMO COLLEZIONE

38





IL SARACENO



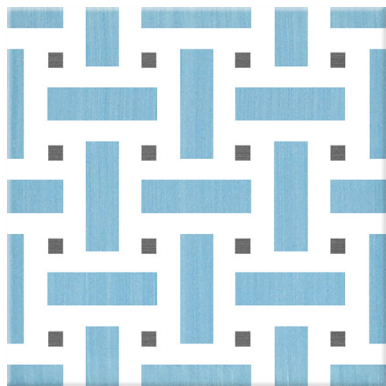
LA FACCIATA

IL DUOMO COLLEZIONE

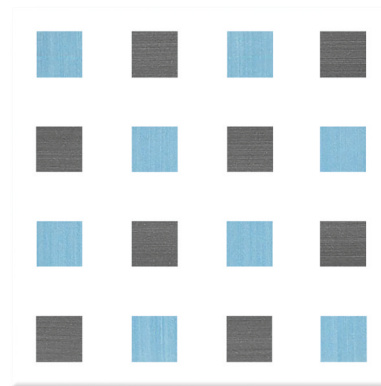
40



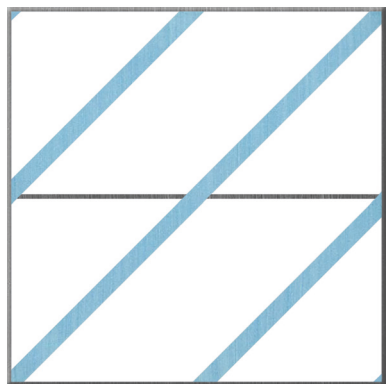




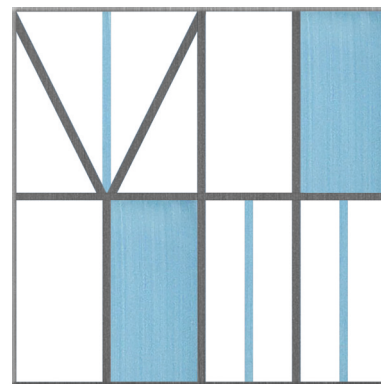
LA CRIPTA



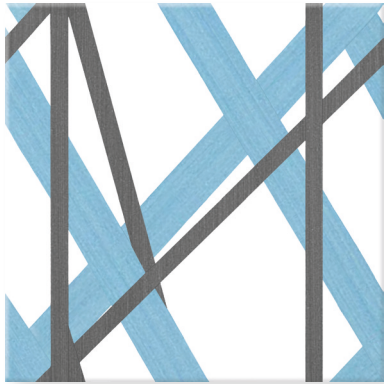
LA NAVATA



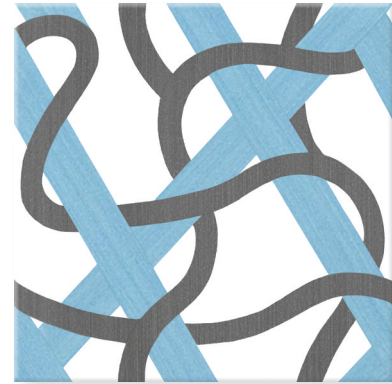
IL DUOMO



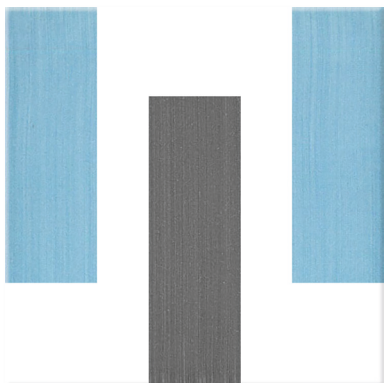
LA FACCIATA



IL SARACENO



IL GUADINO



LA SCALINATA



Azzurro Cielo - Basalto



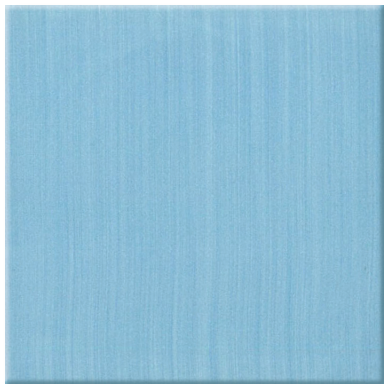
Grigio Chiaro - Viola



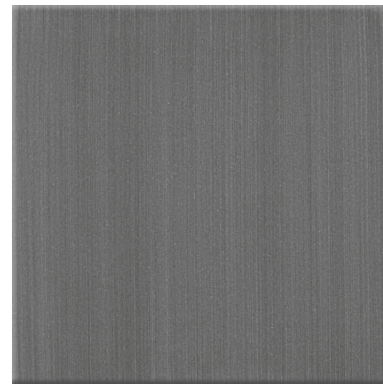
Avana - Verde Scuro



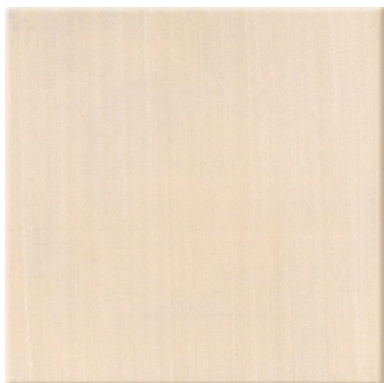
Corallo - Indaco



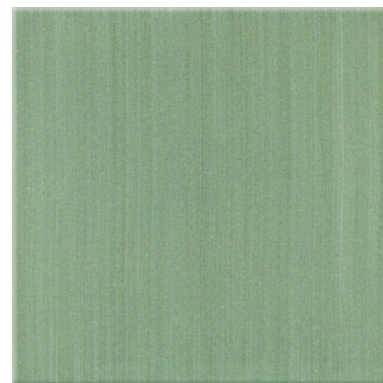
PENNELLATO
Azzurro Cielo



PENNELLATO
Basalto

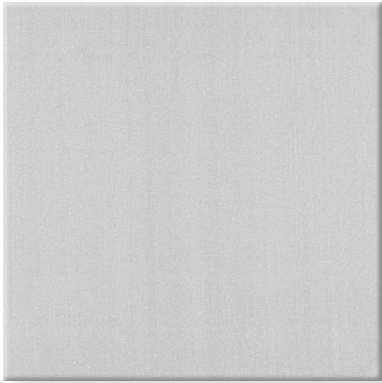


PENNELLATO
Avana

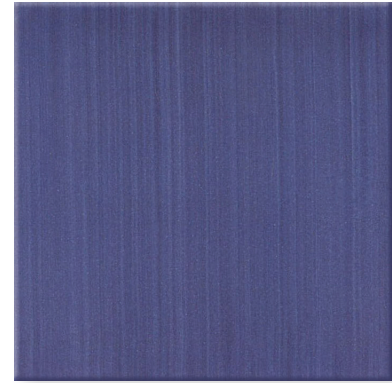


PENNELLATO
Verde Scuro

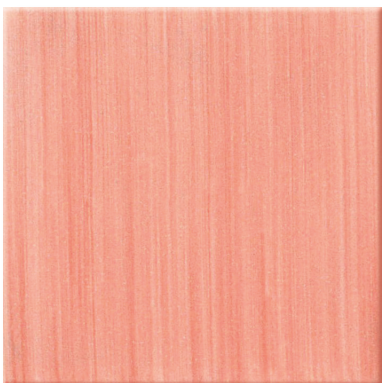
53x53x1,2cm



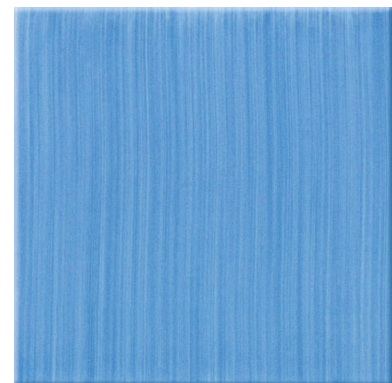
PENNELATO
Grigio Chiaro



PENNELATO
Viola



PENNELATO
Corallo



PENNELATO
Indaco

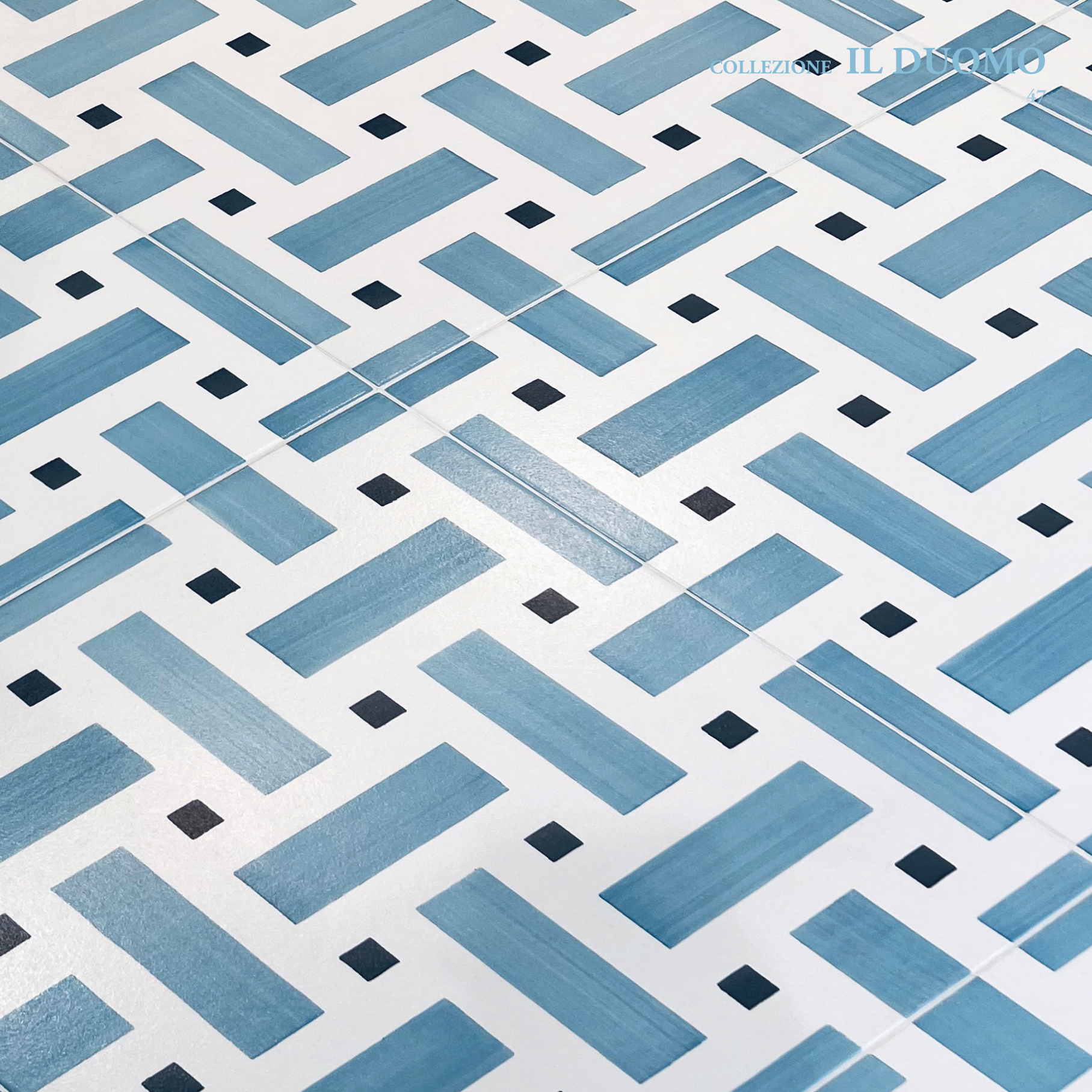
IL DUOMO COLLEZIONE

46



COLLEZIONE IL DUOMO

47





Cattedrale di Sant'Andrea
in Amalfi



CERAMICA DE MAIO FRANCESCO S.R.L. Via Nazionale n.63 – 84015 Nocera Sup. (SA) ITALY

Tel.: +39 081 931011 - Email: info@francescodemaio.it

www.francescodemaio.it

CERAMICA FRANCESCO DE MAIO